

The Ridgeway London, NW11



- Six bedrooms
- Utility Room
- Kitchen/Diner

- Three Floors
- Dressing Room
- Off Street Parking

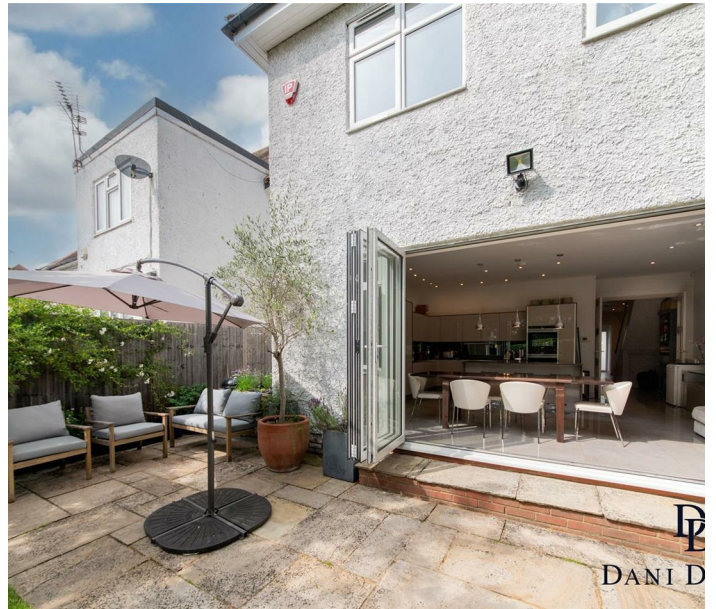
We are delighted to offer this substantial six-bedroom semi-detached family home, nestled on a peaceful and highly sought-after road in Golders Green. The ground floor is perfect for both relaxing and entertaining, featuring two expansive reception rooms, a stunning Neil Lerner kitchen/diner that serves as the heart of the home, and a convenient guest cloakroom. The first floor boasts a luxurious principal suite with a bespoke dressing room and en-suite bathroom, three additional double bedrooms and a contemporary family bathroom ensure ample accommodation for family and guests.

On the top floor there are two further bedrooms a family bathroom and a separate utility room.

Further benefits include a beautifully landscaped south facing garden, and off-street parking.

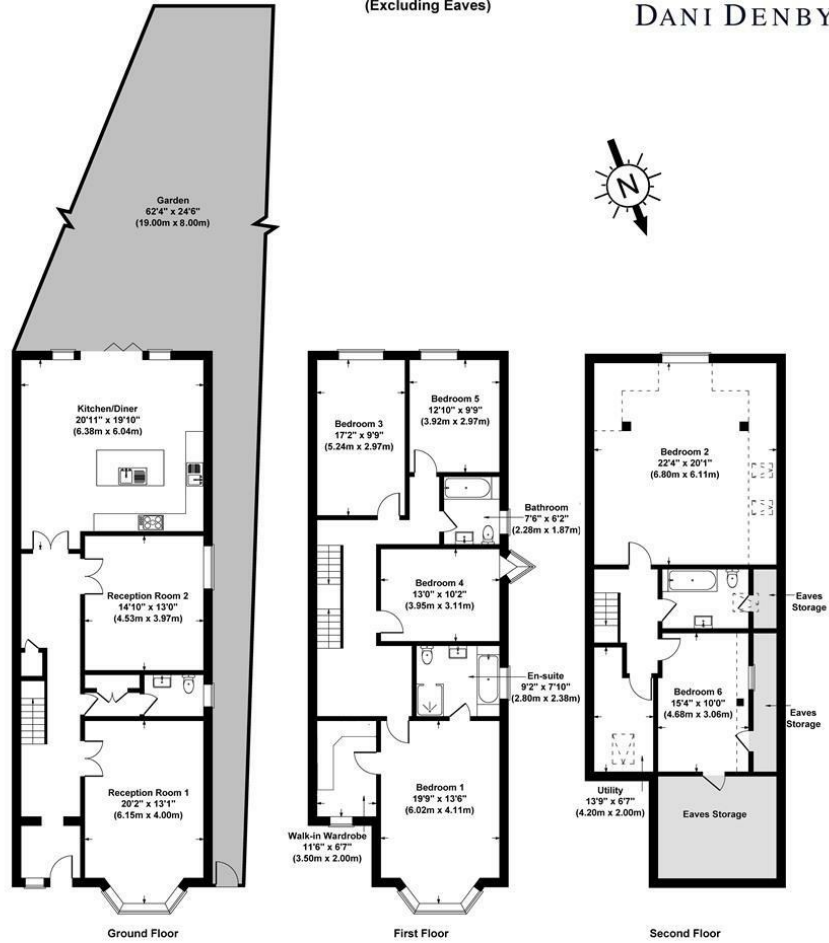
Situated within a 5 minute walk to Golders Green Underground Station, various shops, cafes, and restaurants and a short stroll to Golders Hill Park.

Guide price £2,000,000



The Ridgeway, London NW11 8TB
Gross Internal Area
3143 sq ft / 292 sq metres
(Excluding Eaves)

DD
DANI DENBY



All measurements of walls, doors, windows, fittings and appliances, including their size and location, are shown as standard sizes and therefore cannot be regarded as a representation by the seller.

